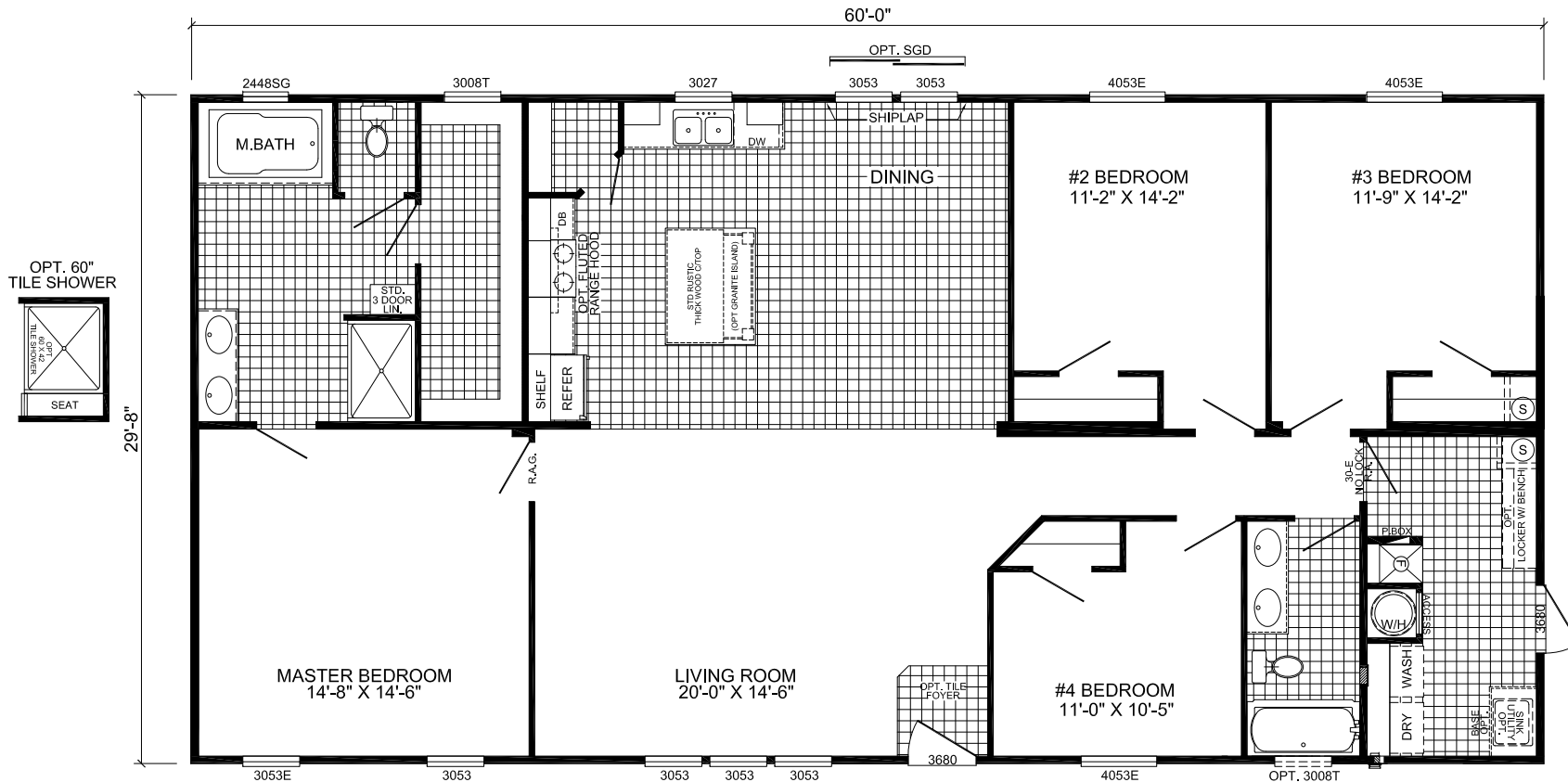


# TUNDRA



**D-3604B**  
**4-BEDROOM / 2-BATH**  
**32 X 64 - Approx. 1780 Sq. Ft.**

Date: 08/29/19

- \* All room dimensions include closets and square footage figures are approximate.
- \* 9'-0" ceilings are NOT AVAILABLE for this model.
- \* Live Oak Homes reserves the right to modify product offering at any time.